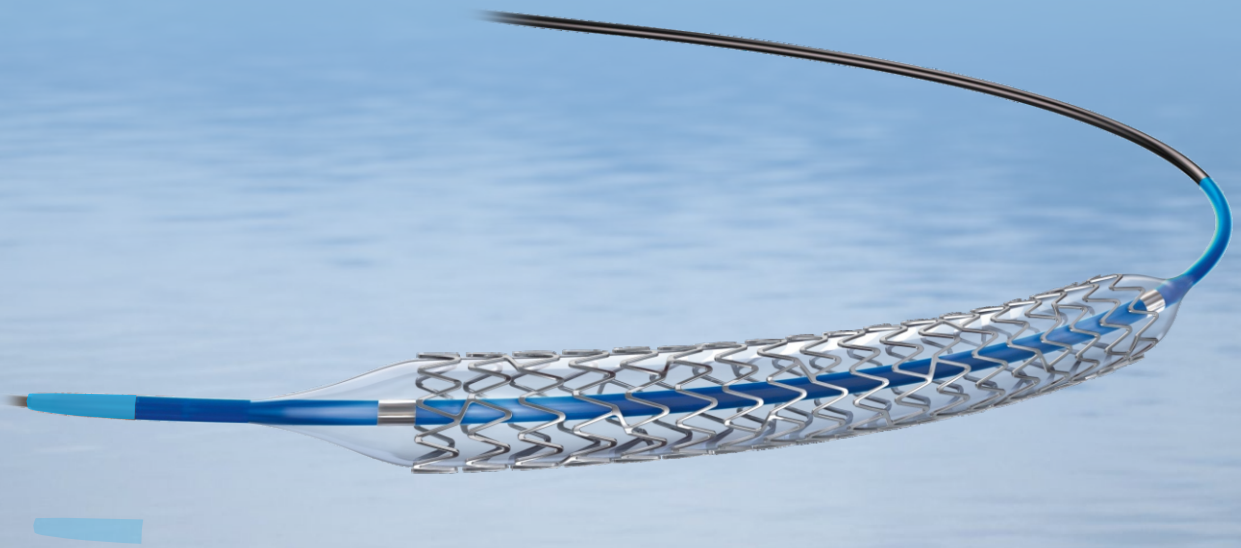


TRACK EVL

Everolimus Eluting Cobalt Chromium Stent System



Expectations meet par excellence



SAH TRACK™

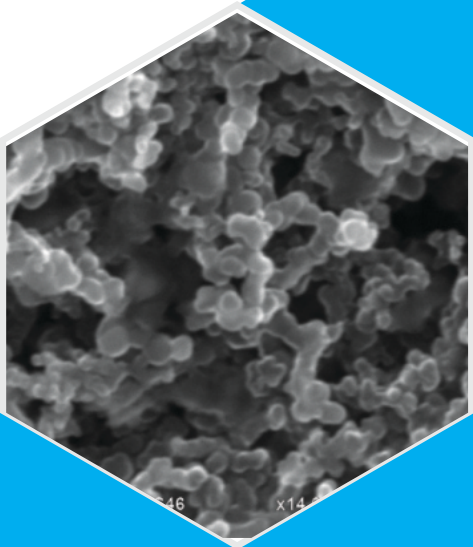
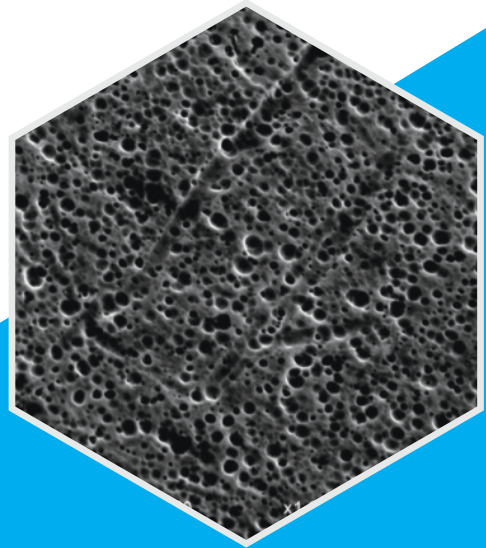
Sah Health Care Pvt. Ltd.



Wider peaks focus strain to minimize recoil

Day-7

Microstructure of degraded polymer layer



Day-14

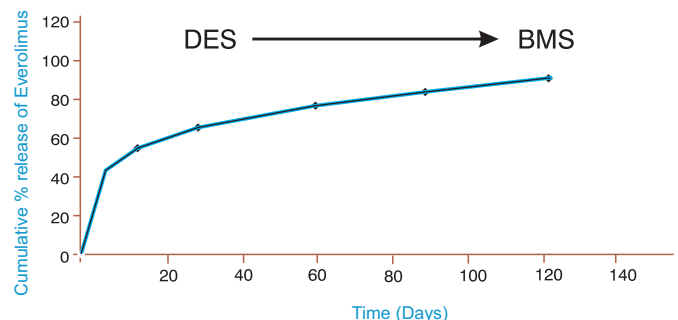
Microstructure of degraded polymer layer

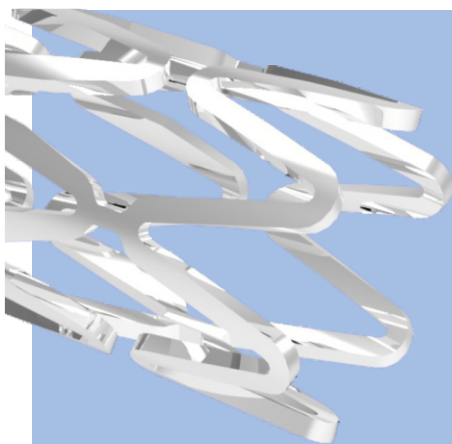
- L 605 cobalt-chromium stent platform with open and closed cell design
 - Unique stent design and strut locking mechanism offers excellent radial strength and minimum recoil.
 - Uniform neointimal coverage and improved stent apposition
 - Completely biodegradable, biocompatible polymer (PLGA Polymer)
 - Loading dose density of $1.0 \mu\text{g}/\text{mm}^2$
 - $3\mu\text{m}$ - uniform coating thickness with precisely programmed release kinetics
- $95\pm 5\%$ of everolimus is released within 90 to 120 days
 - Inhibits in-stent restenosis (ISR) and Late stent thrombosis with adequate re- endothelialization
 - Designed for utmost safety - Pristine displays one of the lowest entry profiles
 - Hydrophilic coated stent delivery system

Technical Specifications of TRACK EVL™

Parameter	Specifications
Available Stent Lengths	08, 10, 12, 13, 15, 16, 18, 20, 24, 28, 32, 36, 40, 42, 44 and 48mm
Available Stent Diameters	2.25, 2.50, 2.75, 3.00, 3.50, 4.00, 4.50 and 5.00mm (for 48 mm stent length, 5.00 mm Diameter is not applicable)
Stent Design	Open and Closed Cell Design
Stent Platform	Co Cr (L605 Cobalt Chromium)
Stent Strut Thickness	60 μm
Stent Foreshortening	< 2%
Recoil	< 4%
Drug	Everolimus
Delivery System	Hydrophilic Coated
Polymer Type	Biodegradable PLGA Polymer
Coating Thickness	3 μm

In Vitro Release Kinetics of
TRACK EVL™
 Everolimus Eluting Cobalt Chromium
 Coronary Stent System





TRACK EVL™

Everolimus Eluting Cobalt Chromium Coronary Stent System

Ordering Information

Diameter (mm)/ Length (mm)	2.25	2.50	2.75	3.00	3.50	4.00	4.50	5.00
8	TRA2250-08	TRA2550-08	TRA2750-08	TRA3000-08	TRA3500-08	TRA4000-08	TRA4500-08	TRA5000-08
10	TRA2250-10	TRA2550-10	TRA2750-10	TRA3000-10	TRA3500-10	TRA4000-10	TRA4500-10	TRA5000-10
12	TRA2250-12	TRA2550-12	TRA2750-12	TRA3000-12	TRA3500-12	TRA4000-12	TRA4500-12	TRA5000-12
13	TRA2250-13	TRA2550-13	TRA2750-13	TRA3000-13	TRA3500-13	TRA4000-13	TRA4500-13	TRA5000-13
15	TRA2250-15	TRA2550-15	TRA2750-15	TRA3000-15	TRA3500-15	TRA4000-15	TRA4500-15	TRA5000-15
16	TRA2250-16	TRA2550-16	TRA2750-16	TRA3000-16	TRA3500-16	TRA4000-16	TRA4500-16	TRA5000-16
18	TRA2250-18	TRA2550-18	TRA2750-18	TRA3000-18	TRA3500-18	TRA4000-18	TRA4500-18	TRA5000-18
20	TRA2250-20	TRA2550-20	TRA2750-20	TRA3000-20	TRA3500-20	TRA4000-20	TRA4500-20	TRA5000-20
24	TRA2250-24	TRA2550-24	TRA2750-24	TRA3000-24	TRA3500-24	TRA4000-24	TRA4500-24	TRA5000-24
28	TRA2250-28	TRA2550-28	TRA2750-28	TRA3000-28	TRA3500-28	TRA4000-28	TRA4500-28	TRA5000-28
32	TRA2250-32	TRA2550-32	TRA2750-32	TRA3000-32	TRA3500-32	TRA4000-32	TRA4500-32	TRA5000-32
36	TRA2250-36	TRA2550-36	PRI2750-36	PRI3000-36	PRI3500-36	PRI4000-36	PRI4500-36	PRI5000-36
40	TRA2250-40	TRA2550-40	PRI2750-40	PRI3000-40	PRI3500-40	PRI4000-40	PRI4500-40	PRI5000-40
42	TRA2250-42	TRA2550-42	PRI2750-42	PRI3000-42	PRI3500-42	PRI4000-42	PRI4500-42	PRI5000-42
44	TRA2250-44	TRA2550-44	PRI2750-44	PRI3000-44	PRI3500-44	PRI4000-44	PRI4500-44	PRI5000-44
48	TRA2250-48	TRA2250-48	PRI2750-48	PRI3000-48	PRI3500-48	PRI4000-48	PRI4500-48	--



SAH HEALTHCARE PVT. LTD.
POCKET-C 565 PAPER MARKET IFC, GHAZIPUR
MAYUR VIHAR PHASE - 3 DELHI 110092 Tel: + 91-999 00 45 799

Contact Our Health Care Representatives:
sahhealthcarepvtltd@gmail.com
Mobile No. +91 99900 45799

Find Out More:
www.sahhcare.com